

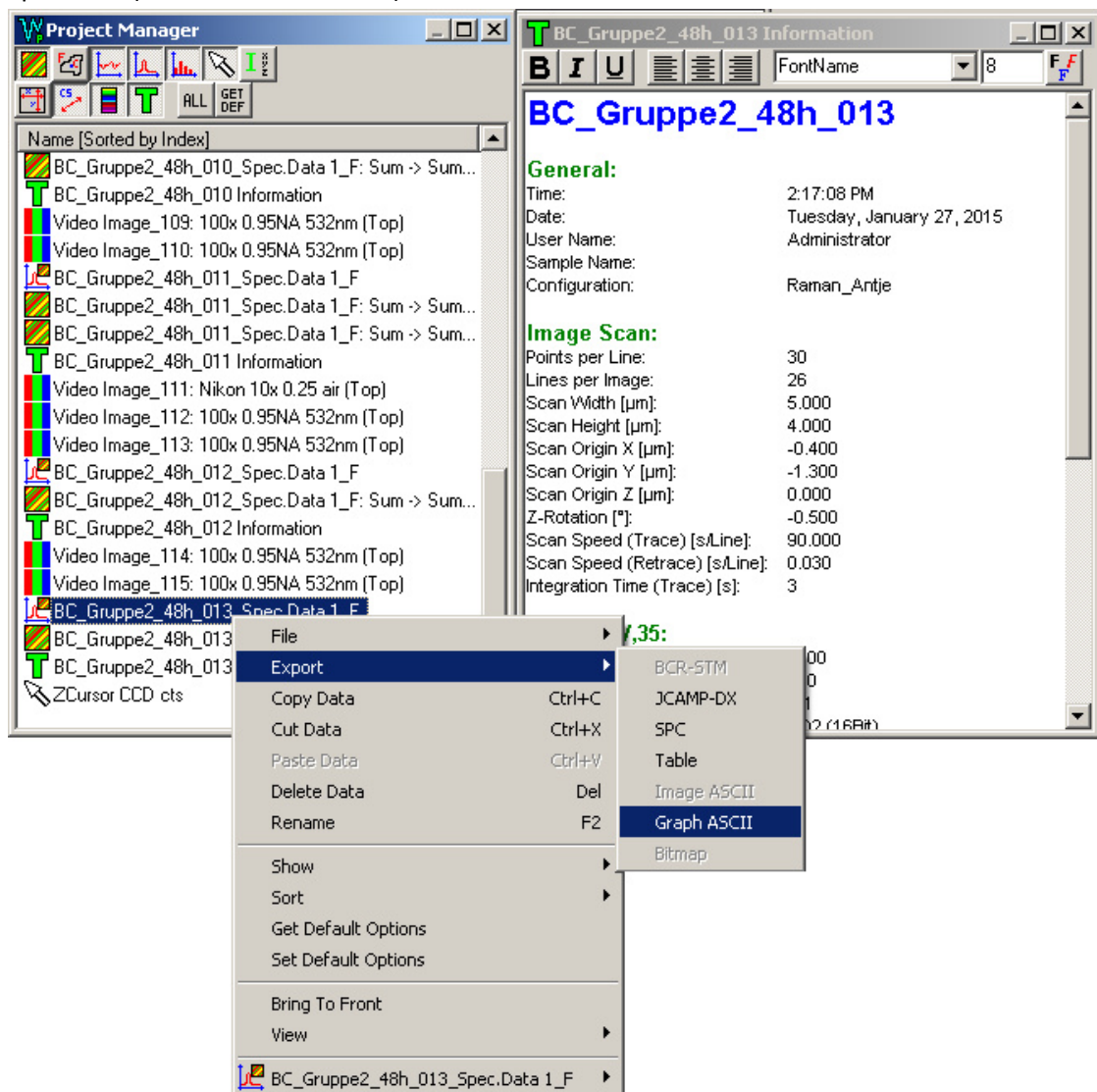
There are two options to export spectra from WITec Project v. 2.10 into CytoSpec:

A. Via the spc (Galactic/Thermo) data format.

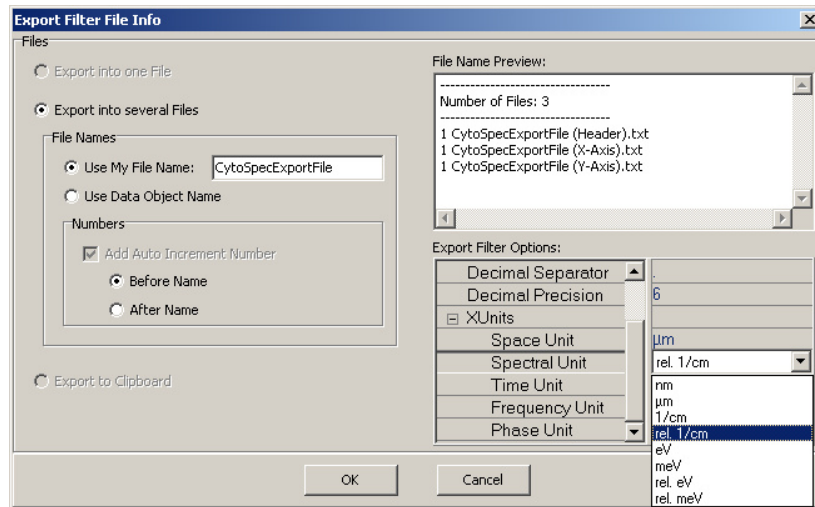
1. To export the data via spc please choose 'SPC' from the context menu of the Spec.Data group (right mouse click, see screenshot). From there simply follow the instructions to store the data.
2. Open CytoSpec and choose import binary --> Galactic Grams/32 (*.spc) from the 'File' pulldown menu.
3. A standard Windows dialog box allows you to browse the directory structure and to select the appropriate data file.
4. In some case an additional dialog box may come up. You will be asked to indicate the number of lines and the number of columns. These values can be found in the information group of the WITec project software (double click on the respective group of the project manager).

B. Via the ASCII data format

1. To export the data via ASCII please choose 'Graph ASCII' from the context menu of the Spec.Data (see screenshot below).



- In the following dialog box indicate the file name and select 'relative 1/cm' as the spectral unit (see below)



- Press OK and select a path to store the ASCII data. WITec project will now generate three separate ASCII named in the following way:
 - '1 YourFileName (Header).txt' - a small header file, contains the number of lines/columns
 - '1 CytoSpecExportFile (X-Axis).txt' - a small ASCII file with the spectral data (x-data)
 - '1 CytoSpecExportFile (Y-Axis).txt' - the multifile containing the Raman intensities.
- The ASCII data can be imported by CytoSpec by choosing 'File' --> 'import binary' --> WITec ASCII (*.x*.dat, *.y*.dat). Upon import you will be asked to indicate the number of lines / number of columns of the hyperspectral Raman image (see header file). This information is not part of the ASCII spectra files. Note that CytoSpec assumes *.dat files instead of *.txt files (see screenshot).

